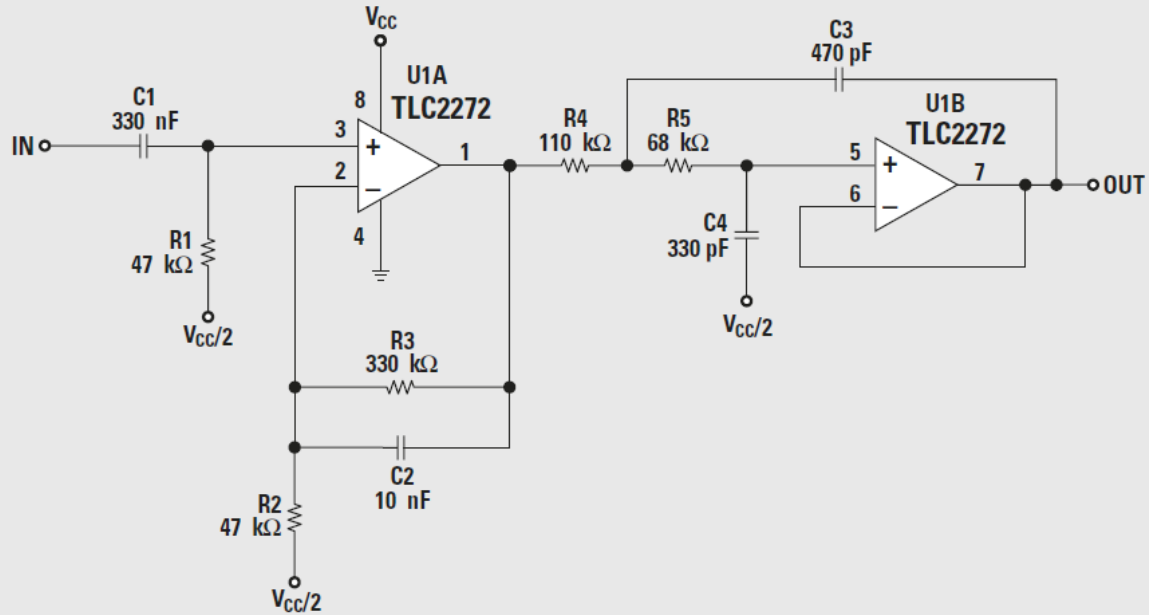


After looking over several approaches to correcting the RIAA curve, I have decided on a two op amp active filter, one with a first order high pass on the non-inverting input a first order low pass filter on the inverting input with gain. The second filter is an active filter with a Sallen-Key configuration to flatten the response more in the 1KHz-2Hz, region. Finally, a variable gain amplifier will bring the output voltages up to line level values. This design should end up looking similar to figure 14 in An audio circuit collection, Part 2, shown here. [1]

Figure 14. Unity-gain Sallen-Key equalizer



Citation

[1] B Carter. (2006). *An audio circuit collection, Part 2*[Online]. Available: <http://www.ti.com/lit/an/slyt145/slyt145.pdf>